

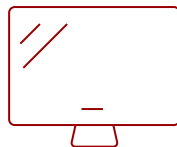
PA700X - 4,500 ANSI LUMENS XGA BUSINESS/EDUCATION PROJECTOR

Key Features

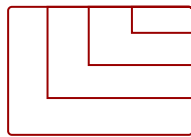
- High brightness 4500 Lumens XGA (1024x768p) projector with advanced visual features
- Easy setup with 1.1x optical zoom, and 40-degree vertical keystone
- SuperEco Mode allows the lamp to shine bright for up to 12,000 hours
- Supports most media players, PCs, Macs, and mobile devices with inputs such as dual HDMI, VGA, and USB inputs



30 - 300 in. / 0.76 - 7.62 m
DISPLAY



PANEL



VGA(640 x 480) to FullHD(1920 x 1080)
RESOLUTION



Product Description

Put your presentations in the best light with the ViewSonic® PA700X XGA projector. This state-of-the-art high brightness projector combines a powerful 4,500 ANSI lumens and XGA resolution for stunning images on a 300" screen. Dual HDMI ports empower you to seamlessly switch between different devices while a USB Type-A port lets you connect wireless dongles directly into the projector. And with easy USB software updates, you can effortlessly keep your projector up-to-date with the latest features. Whether you consider the PA700X a business projector or an education projector, this powerful device is the perfect presentation tool for any environment.

Specifications

[More Information](#)

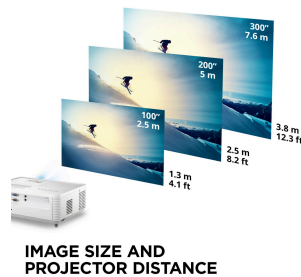
UPC

766907020007

Light Source	DLP Lamp
Display Resolution	XGA (1024x768)
Display Resolution	1024 x 768
Brightness (Lumens)	4,500 ANSI
Screen Size	30 - 300 in. / 0.76 - 7.62 m
Throw Distance	1.18m-13.17m (100"@3.94m)
Throw Ratio	1.94-2.16
Keystone	Vertical (+/- 40°)
Lens	1.1x optical zoom
Light Source (watt)	240
Light Source Life, Normal (hours)	4000
Light Source Life, Dynamic Eco-Mode (hours)	12000
Color Depth	1.07 Billion Colors
Dynamic Contrast Ratio	22,000:1
Aspect Ratio	4:3
Input Lag	37ms
Frequency Horizontal	15K~102KHz
Frequency Vertical	23-120Hz
PC Resolution (max)	VGA(640 x 480) to FullHD(1920 x 1080)
Mac® Resolution (max)	480i, 480p, 576i, 576p, 720p, 1080i, 1080p
USB 2.0 Type A	1
3.5mm Audio Out	1
3.5mm Audio In	1
Control (RS232)	1
HDMI 1.4 (with HDCP 1.4)	2
VGA In	1
VGA Out	1
Internal Speakers	3W (x1)
Voltage	100-240V+/- 10%, 50/60Hz AC
Consumption (typical)	300W
Stand-by	<0.5W
Physical Controls	Keypad, Power key
On Screen Display	Display, Image, Power Management, Basic, Advanced, System, Information (See user guide for full OSD functionality)
Temperature	32-104° F (0 - 40° C)
Kensington Lock Slot	1

Net (lbs)	6
Gross (lbs)	8.4
Net (kg)	2.7
Gross (kg)	3.8
Packaging (in.)	15.7 x 13.3 x 6.6
Physical (in.)	12.2 x 9.2 x 4.5
Packaging (mm)	400 x 337 x 168
Physical (mm)	309 x 234 x 115
Regulations	cTUVus
Package Contents	Projector, power cable, remote control, Quick Start Guide
Warranty	Three-year limited warranty on parts and labor, 1-year limited warranty on the light source, 1st year free Express Exchange® service. (One year Express Exchange Service requires product registration).
Recycle/Disposal	Please dispose of in accordance with local, state or federal laws.

UPC: 766907020007



Contact Sales
ViewSonic.com
 888.881.8781
 email:
salesinfo@viewsonic.com